

Copyright notice

The copyright for this presentation remains with HS2 Ltd.

It cannot be reproduced as a whole or in part without written permission from HS2 Ltd.

If required, please contact our Corporate Communications Team at corporatecomms@hs2.org.uk.



HS2

Balfour Beatty VINCI 

HS2 – Britain's new high speed railway

Andy de Bell, BBV Community Engagement Manager

2nd November 2018

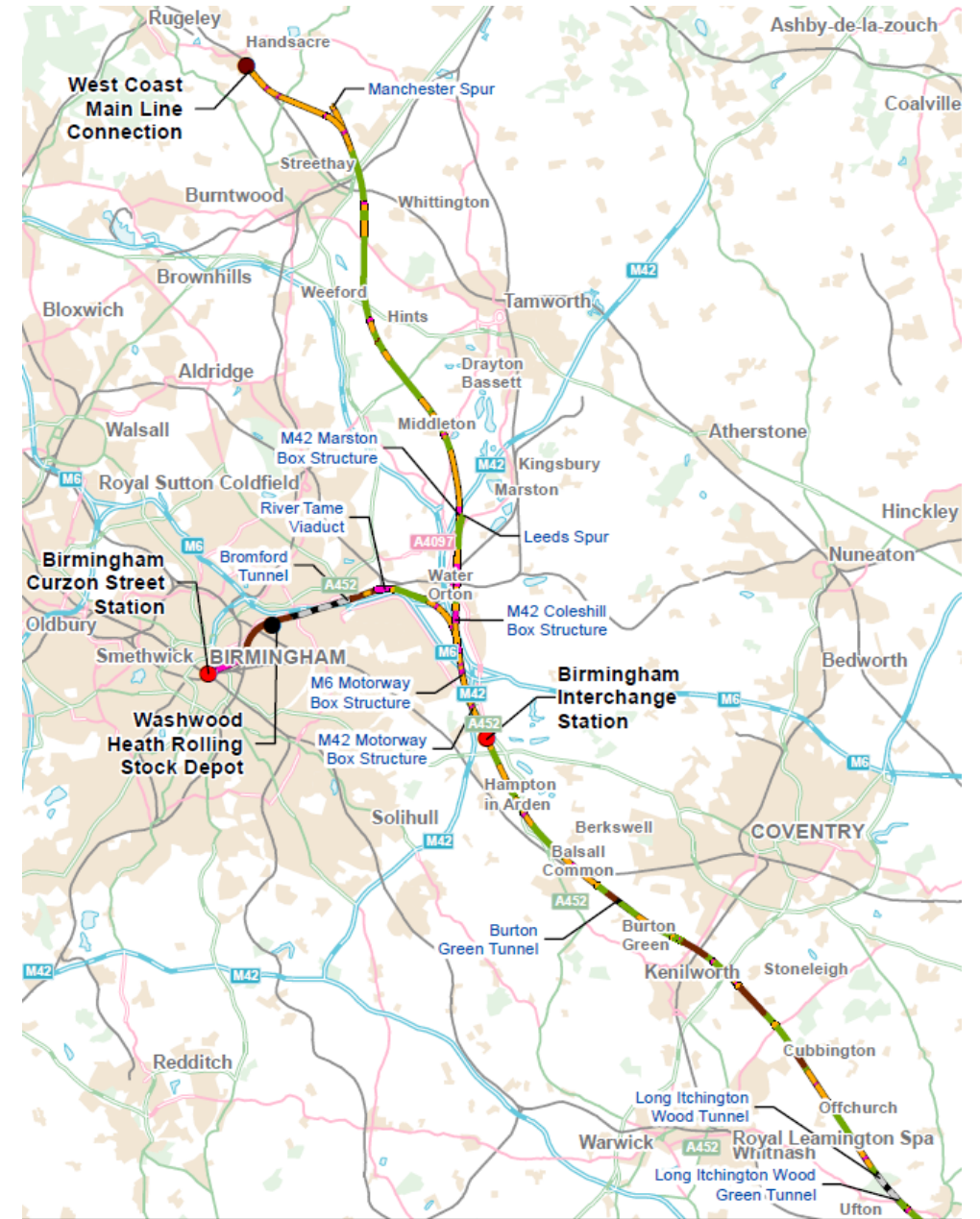
Contents

1. Introduction
2. Haul route Proposal
3. Berkswell proposal for alternative haul route
4. Viaduct/bridge design
5. Cutting Plans

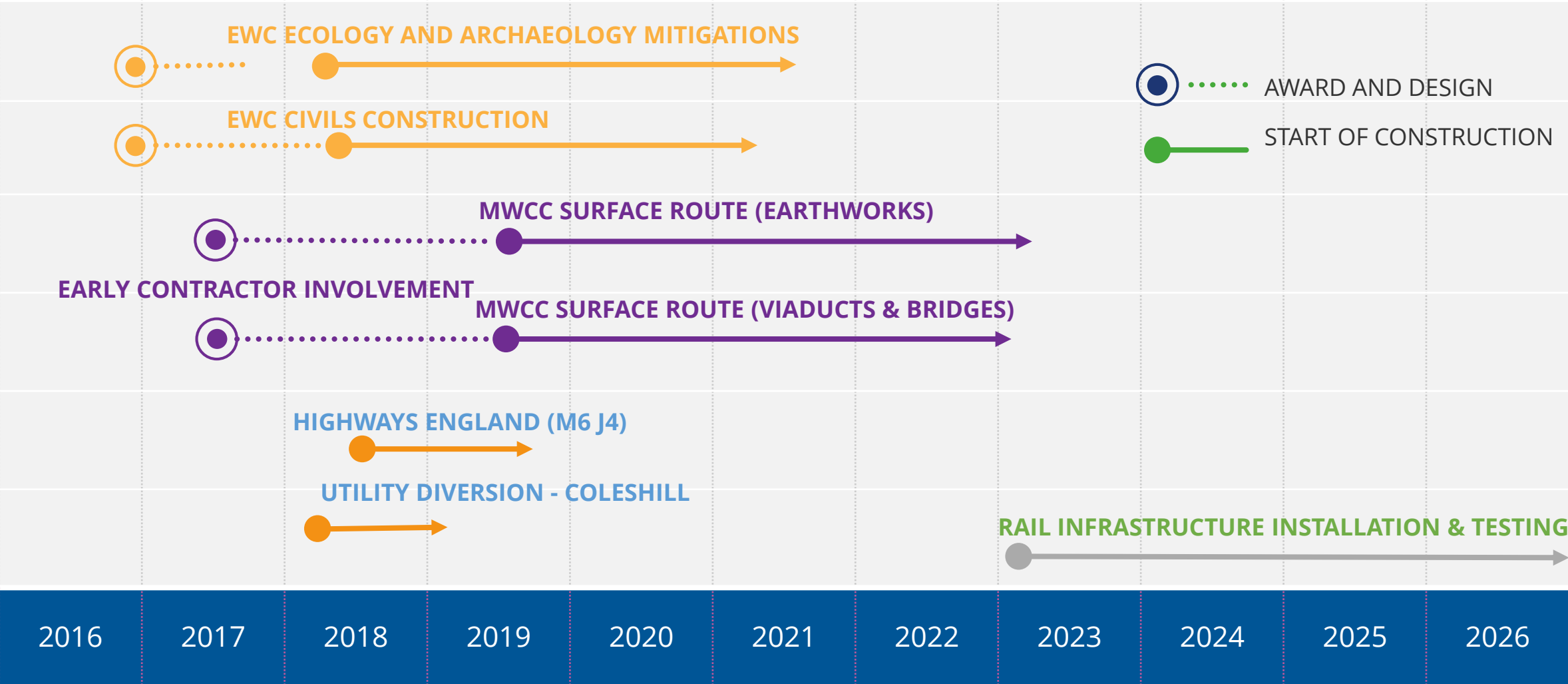


What is BBV?

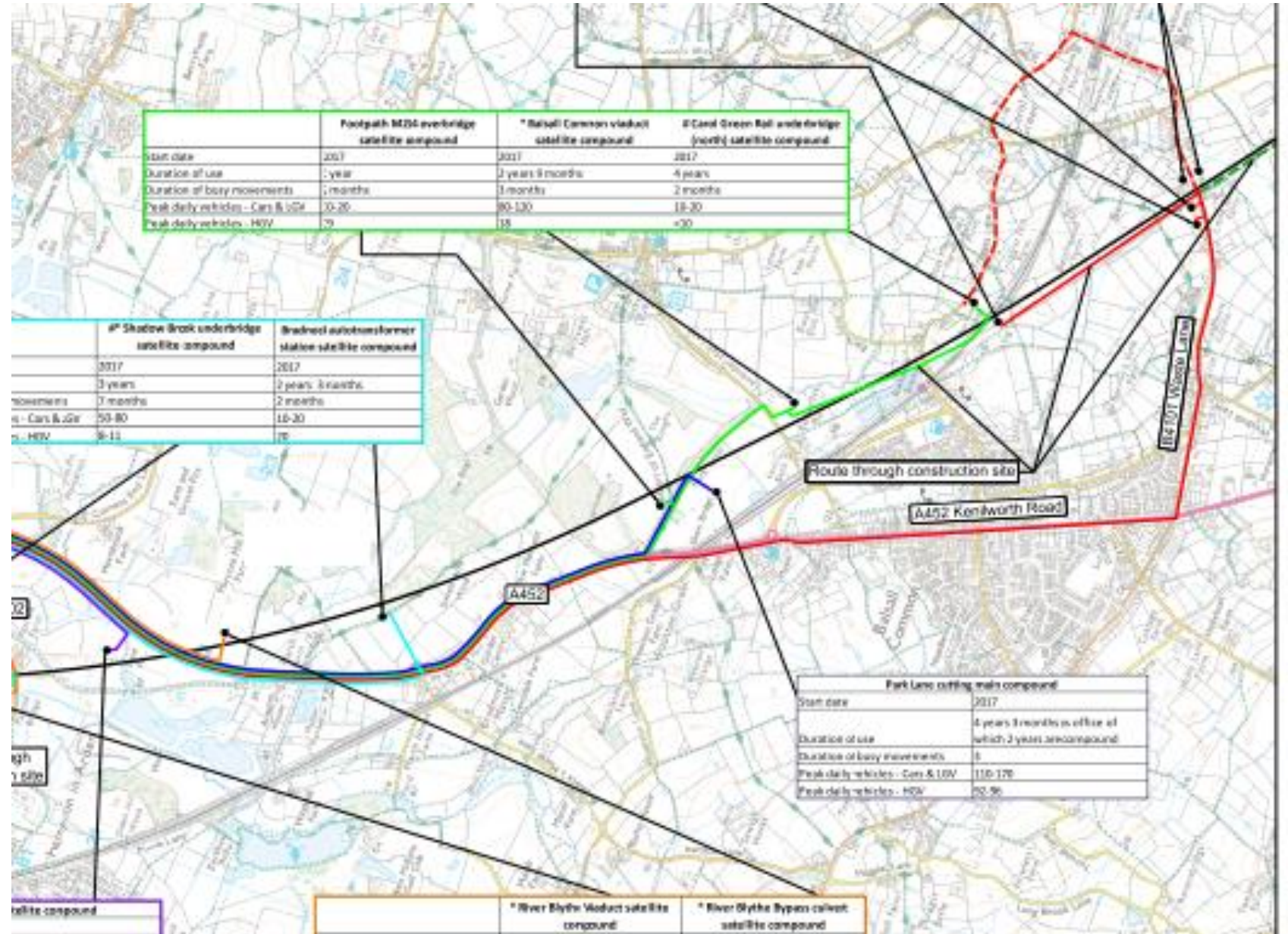
- 50:50 JV between BB Group and VINCI, formed in 2011
- Working together on Crossrail and the Smart Motorways programme
- Tours-Bordeaux completed early and recently opened – a new 300km high speed line
- Supported by Mott MacDonald SYSTRA as 50:50 Design JV



High Level Programme of Works



2. Haul Route Proposal



Haul Route Proposal

- Design in development
- The proposal is outside Act powers
- A change proposal to be submitted to HS2
 - Land owner agreement
 - Planning application – early 2019

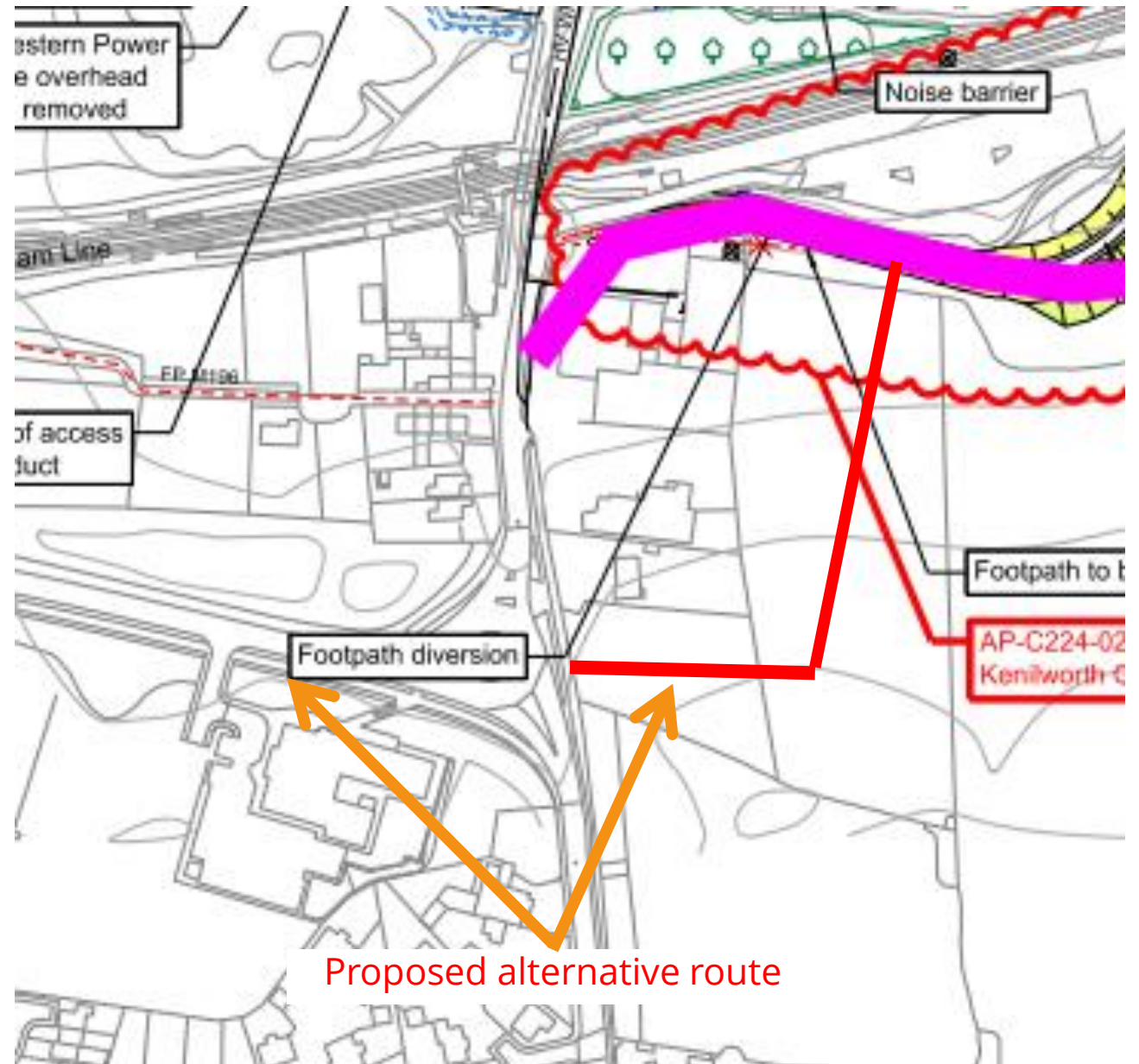


Delivery and Haul Route Development - alternative:

- Use of Hall Meadow Road
- Link from roundabout to run behind garage and British Legion
- Additional car parking
- Pedestrian access to station

Traffic volumes:

- Work in process
- Period of use : mid/late 2019 to mid 2023
- Peak : 350/400 HGV

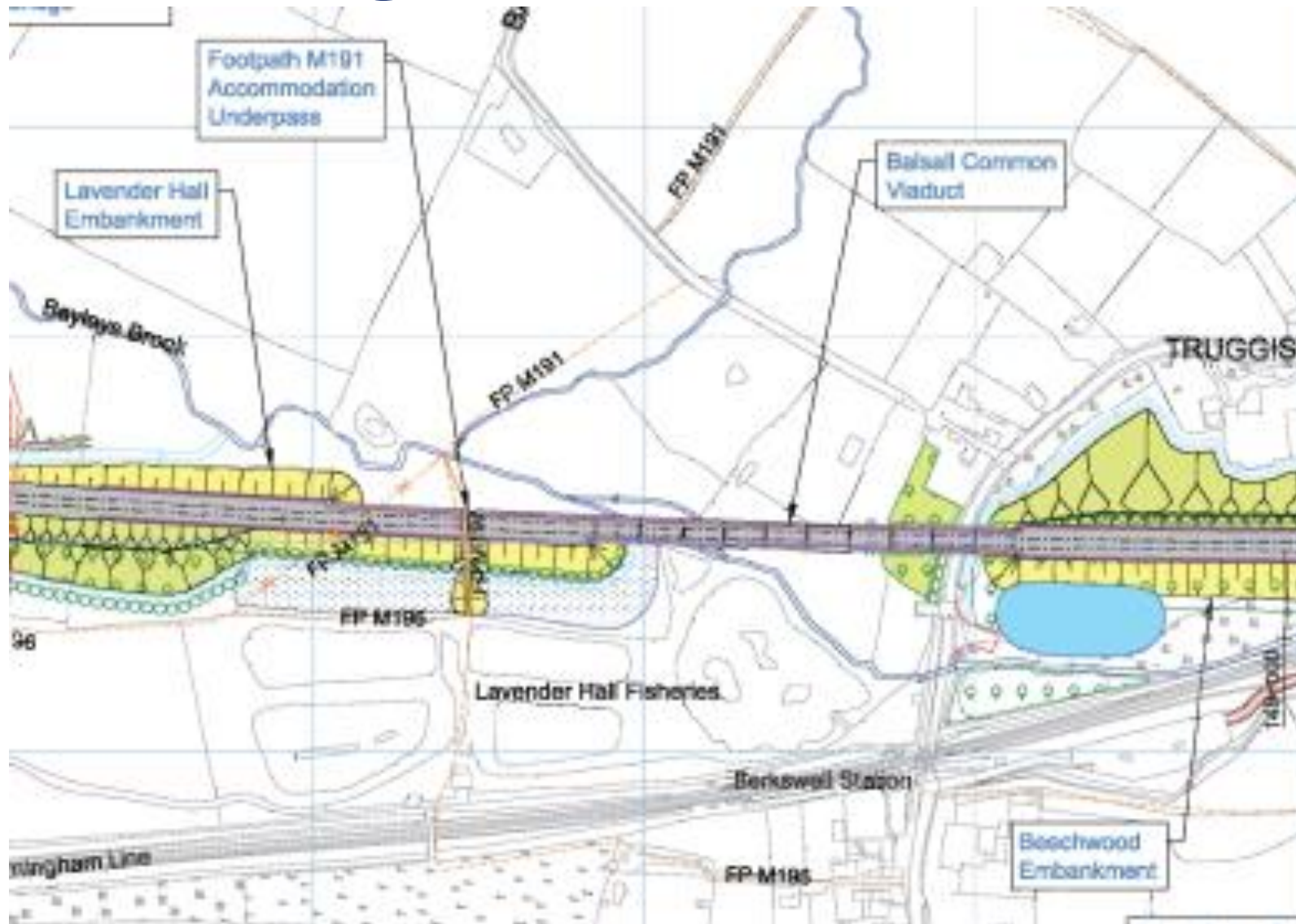


3. Berkswell proposal for alternative haul route

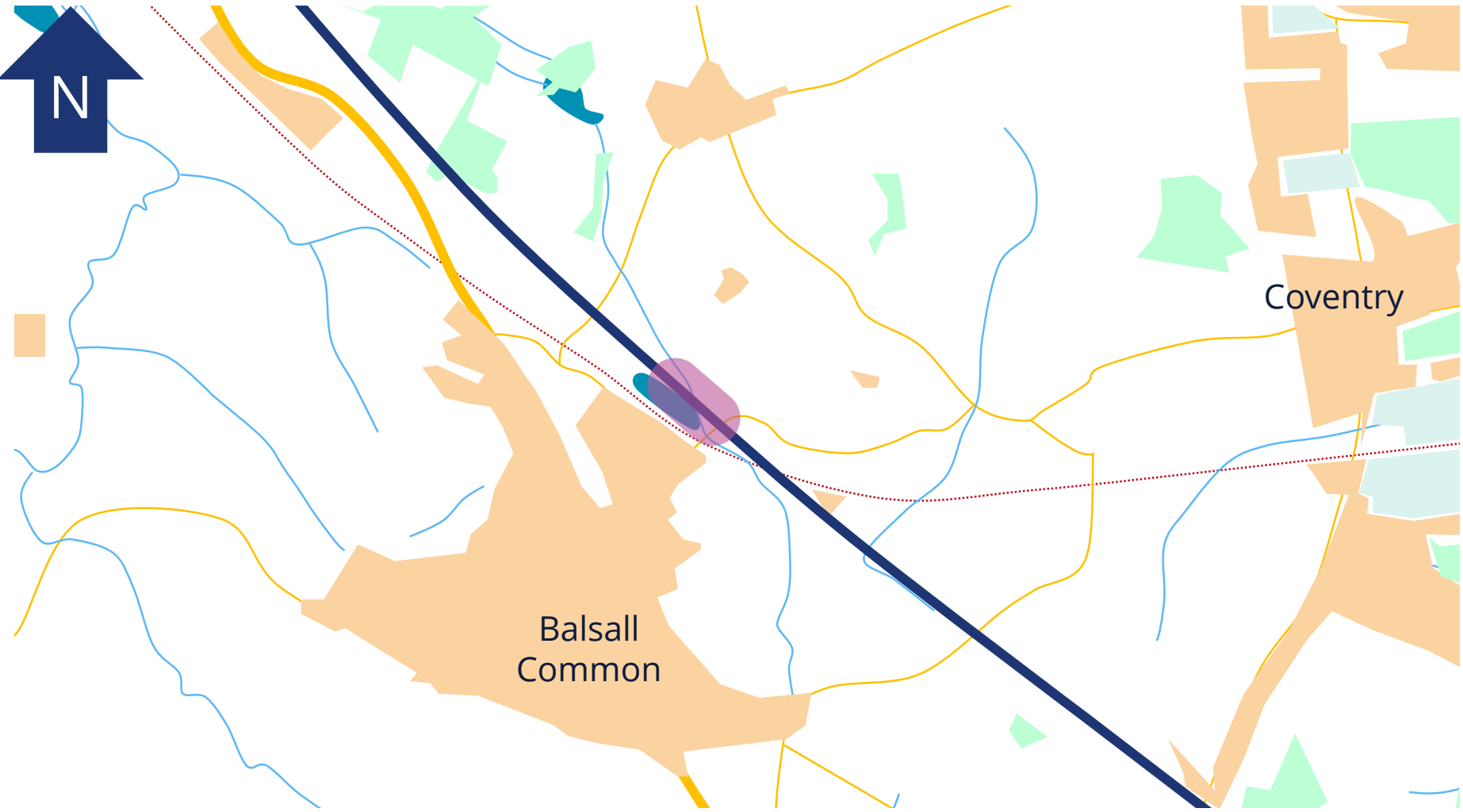
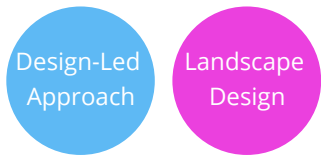
- Temporary bridge across Bayleys Brook
 - Environmental restrictions
 - Volume of movements within permitted area
- Accommodation Bridge across WCML - un-suitable
 - Condition
 - Size and capacity
 - Programme impact
- Temporary bridge over WCML
 - Network Rail requirements
 - Programme impact



4. Viaduct Design



Balsall Common



- Residential
- Commercial / Industrial
- Water
- Green Space
- Ancient Woodland
- Alignment
- Carriageway
- Existing Rail
- Footpath

Balsall Common

Key Drivers for Landscape Integration



Heritage and culture

- Conservation and enhancement of historic landscape features at Berkswell House and Berkswell Hall;
- Conserve the setting of Lavender Hall (Grade II*) through earthwork design and planting to reflect the copses and spinneys found locally.



Water

- Continuity and enhancement of wetland features on both sides of the viaduct, including realignment of Bayleys Brook and flood compensation areas to reflect the habitat found around the fishing lakes.



Ecology

- Promote linkages on either side of the viaduct using the grain of the retained landscape and the realigned Brook.



Landscape interfaces with buildings and structures

- Conservation and enhancement of intimate field boundaries with their clipped hedgerows and protection of characteristic mature oaks combined with earthworks which respond to the local topography;
- Consideration of the solid to void ratio of the viaduct structure to minimise solidity of the deck and noise barriers when viewed from the surrounding landscape.



Balsall Common



The Roughs

Park Pale

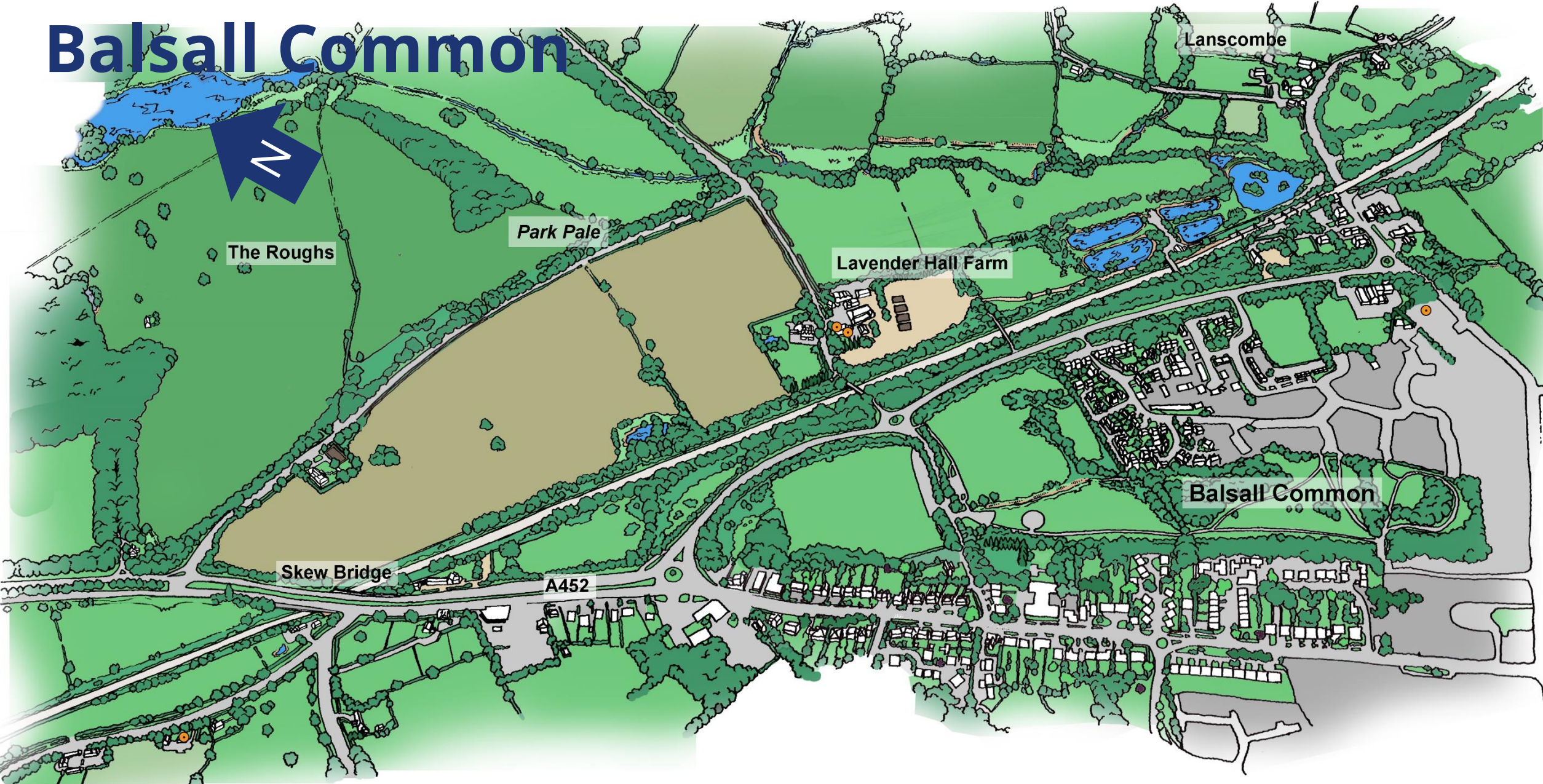
Lavender Hall Farm

Lanscombe

Balsall Common

Skew Bridge

A452



Existing Context



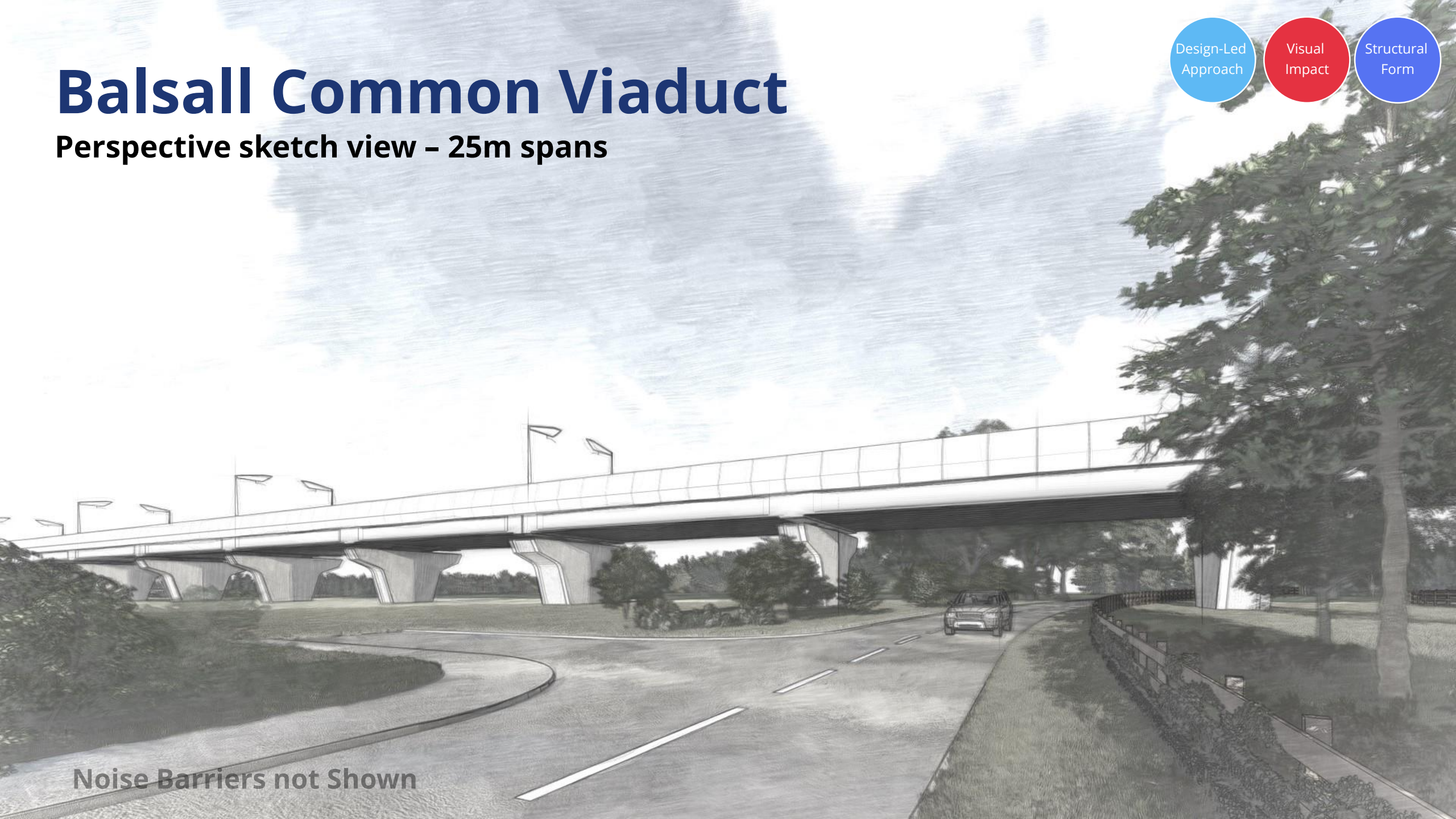
Balsall Common Viaduct

Perspective sketch view - 25m spans

Design-Led
Approach

Visual
Impact

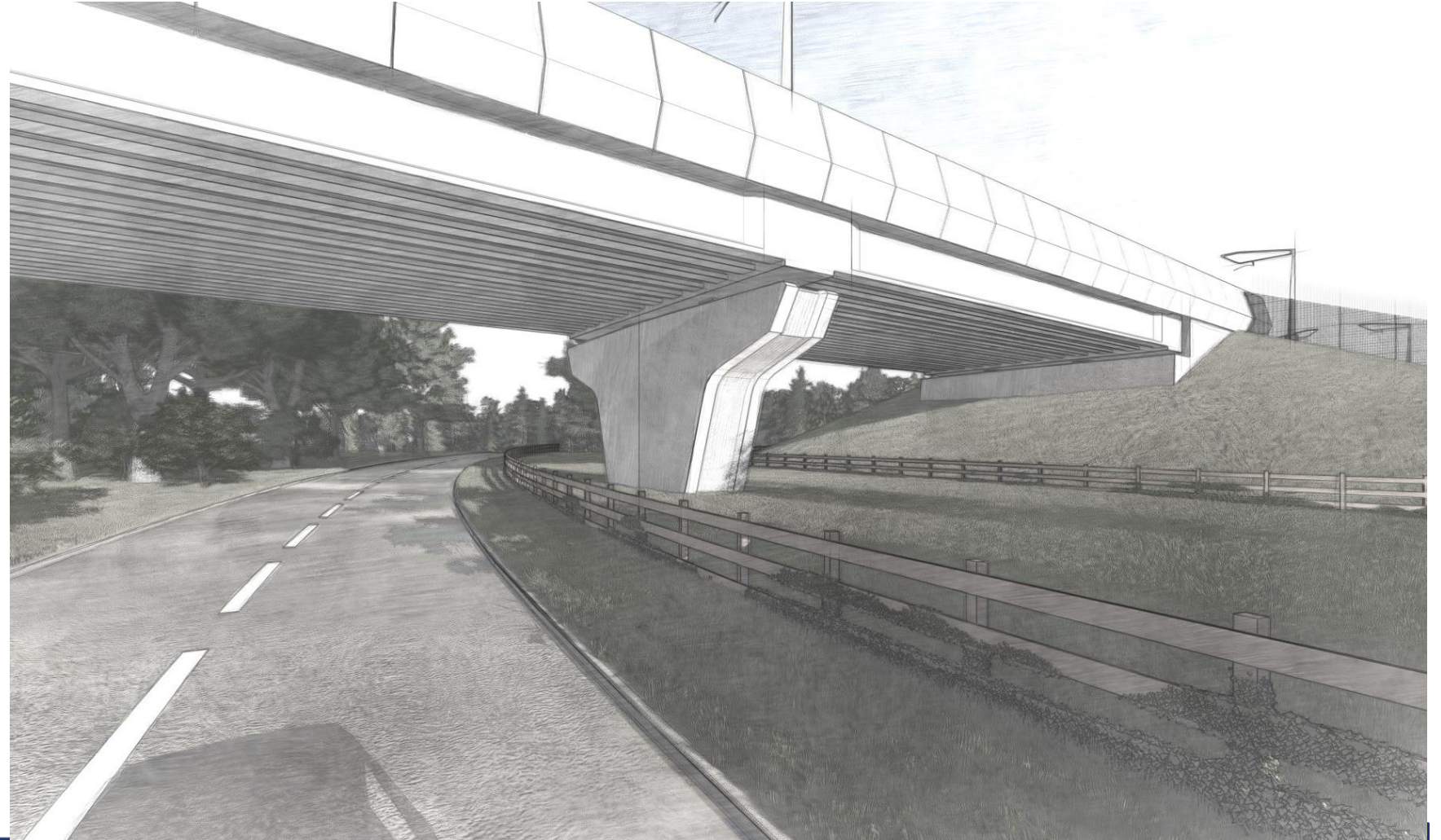
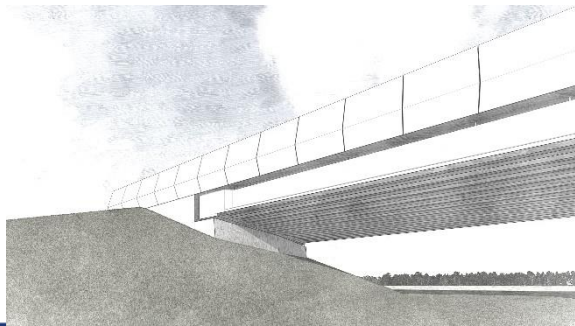
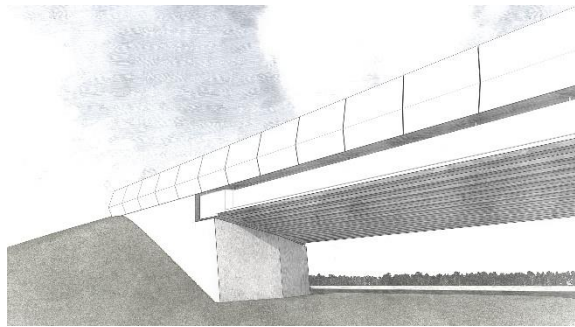
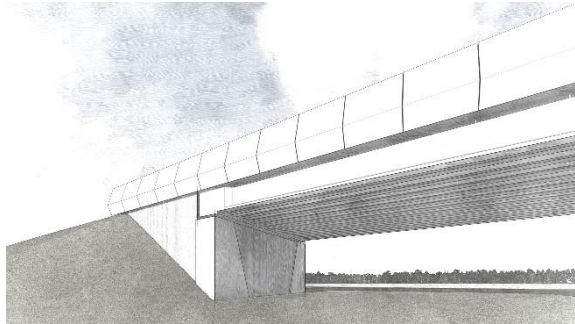
Structural
Form



Noise Barriers not Shown

Balsall Common

Landscape Integration at Abutments Refinement studies



Structure in context - Sections



4. Viaduct Design

- Key Design Element
 - Engagement exhibitions
- Noise barrier design
 - Noise modelling
 - Design developing
 - Durability and asset life requirements
- Gantry design
 - Not in Balfour Beatty Vinci scope
 - Track systems



Key Design Elements – Public Engagement

Balsall Common Viaduct

What are we planning?

- To run a series of focussed, public exhibitions to **inform** the local community of emerging Key Design Element (KDE) designs
- To **involve** local residents and stakeholders in the KDE design process
- To give local residents the opportunity to **respond** to KDE designs in a structured way through a feedback questionnaire



5. Cutting Plans

Cutting plan in development and is informed by the Assurance.
Compliance plan to satisfy the assurance will support the work.



Questions?

Helpdesk (24 hours) 08081 434 434

email: hs2enquiries@hs2.org.uk

Website: www.gov.uk/hs2

High Speed Two (HS2) Limited, Two Snowhill, Queensway, Birmingham B4 6GA



Copyright notice

The copyright for this presentation remains with HS2 Ltd.

It cannot be reproduced as a whole or in part without written permission from HS2 Ltd.

If required, please contact our Corporate Communications Team at corporatecomms@hs2.org.uk.

